

BEAUTY ON IRISBEND

Irisbend Ave, Eastvale

- House
- Bedrooms: 5
- Bathrooms: 4.5
- Area: 3194 sq.ft.
- MAX OCCUPANCY: 11
- STANDARD OCCUPANCY: 10
- King Size Bed: 1
- Queen Size Beds: 4

AMENITIES

- Wi-Fi
- Free Parking
- Mailbox
- TV
- Dishwasher
- Washer/Dryer
- Silverware
- Cleaning Supplies
- Ironing Board
- Air Conditioner
- Heater
- Swimming Pool
- Patio

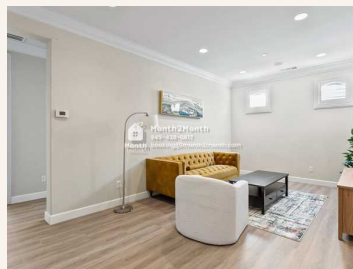
DESCRIPTIONS

For stays over 31 days, utilities are not included.

Gorgeous property located in the heart of Eastvale! This home offers 3,194 square feet of living space including 5 bedrooms and 4.5 bathrooms. You are immediately greeted by beautiful tile flooring, crown molding and recessed lighting installed throughout the first floor, offering an elegant feel. The kitchen opens up to the family room allowing you to entertain effortlessly and boasts a large island with additional seating, stainless steel appliances, a walk-in pantry, and enough cabinet space for all of your organizational and storage needs. Moving along upstairs you will find the loft that is open and inviting, perfect for an additional family room or game room. The master bedroom showcases a spacious en-suite with dual sinks, a walk-in shower, a deep soaking tub, and a walk-in closet with customized built-ins. The home is chic, elegant, and incredibly spacious. With a location that is hard to beat, this gem in Eastvale is a must see!

Guest Access

- Highly Desired Community
- Clean, Fully Furnished and Decorated Home Located in the heart of Eastvale
- Remodeled Kitchen Equipped with Granite Counter Tops and a Spacious Center Island



- Five Bedrooms, Walk-in Closets, Additional King, Queen and Twin Sized Beds
- Beautiful Tile Flooring, Natural Lighting and Designer Rugs Throughout The Home
- Four Full Bathrooms and One Half Bathroom
- HOA amenities include swimming pool, Jacuzzi and fitness room
- 2 Car Attached Garage Including Laundry Room With Washer and Dryer
- No street parking within the community. Additional parking is available outside community, a few blocks away.
- The tenant will be billed 64.36/month to cover the cost of bills from the solar energy company

LOCATION

This 5 bedroom in Eastvale is surrounded by award winning schools and beautiful parks, including Celebration Park, Orchard Park, and Harada Heritage Park. The winding Santa Ana River trail and expansive Prado Regional Park are both nearby. You're close to the 60 and 15 freeways, connecting you with Riverside, San Bernardino, and more. Local shopping and cuisine are at your fingertips, including closeby Miguel's Jr, Waba Grill, and Brushfire Kitchen. Do not miss the opportunity to visit the historical Mission Inn Museum and immerse yourself in local history & art.

